

PANTIG WORKSHEETS (Posted March 2018)
TERMS OF USE

By downloading this PDF file, you agree to the following terms:

1. This PDF file is for personal and classroom use ONLY.
2. You may print this PDF file and distribute the printouts to your children or students, but you MAY NOT distribute the printouts to other parents or teachers.
3. You MAY NOT share digital copies of this PDF file with anyone. Just refer them to samutsamot.com.
4. You MAY NOT print and distribute this PDF file for profit or use it for any commercial purpose.
5. You MAY NOT upload this PDF file or any part of it in any other website such as (but not limited to) *Scribd* or *SlideShare*, or cloud storage sites such as (but not limited to) *Google Drive* or *Dropbox*. The artists mentioned below own the copyrights to the clip art images in this PDF file. Uploading this file in another website is an infringement of their copyrights.

If you have any questions regarding the use of this PDF file, you may e-mail me at samutsamot.mom@gmail.com.

This PDF file features clip art by Kari Bolt and Little Red's Clip Art.

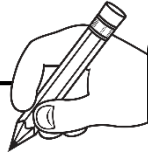


www.littleredtreehouse.com

<https://www.teacherspayteachers.com/Store/Littlered>



<https://www.teacherspayteachers.com/Store/Kari-Bolt-Clip-Art>



Magsulat tayo!

Panuto: Bilugan ang tamang pantig na bubuo sa salita para sa isang lugar. Pumili sa mga pantig sa loob ng panaklong. Isulat ang buong salita sa kahon.

1. paara____ (ran, lan, wan)

2. ____dahan (pin, din, tin)

3. bo____ka (ti, ta, to)

4. opi____na (mi, gi, si)

5. ospi____ (tal, kal, dal)

6. pa____ke (leng, lang, long)

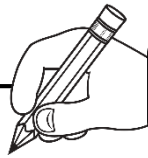
7. ____bahan (bim, lim, sim)

8. pab____ka (hi, ri, di)

9. sine____ (pan, tan, han)

10. pala____an (du, ru, yu)





Magsulat tayo!

Panuto: Bilugan ang tamang pantig na bubuo sa salita para sa isang lugar. Pumili sa mga pantig sa loob ng panaklong. Isulat ang buong salita sa kahon.

1. pa•a•ra•_____ (ran, lan, wan)

2. _____•da•han (pin, din, tin)

3. bo•____•ka (ti, ta, to)

4. o•pi•____•na (mi, gi, si)

5. os•pi•_____ (tal, kal, dal)

6. pa•_____•ke (leng, lang, long)

7. _____•ba•han (bim, lim, sim)

8. pab•____•ka (hi, ri, di)

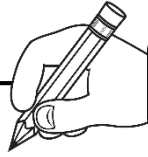
9. si•ne•_____ (pan, tan, han)

10. pa•la•____•an (du, ru, yu)



Pangalan _____

Petsa _____



Magsulat tayo!

Panuto: Bilugan ang tamang pantig na bubuo sa salita para sa isang bahagi ng ulo o katawan. Pumili sa mga pantig sa loob ng panaklong. Isulat ang buong salita sa kahon.

1. ka_____ (lay, may, say)

2. _____ha (nguk, huk, muk)

3. bu_____ (hok, dok, gok)

4. bali_____ (sat, mat, kat)

5. _____ti (win, gin, bin)

6. da__ri (pi, li, fi)

7. tu_____ (hod, kod, tod)

8. dib_____ (lib, kib, dib)

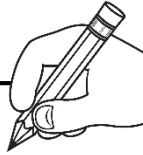
9. li_____ (hod, nod, kod)

10. bi_____ (sig, ngi, lig)



Pangalan _____

Petsa _____



Magsulat tayo!

Panuto: Bilugan ang tamang pantig na bubuo sa salita para sa isang bahagi ng ulo o katawan. Pumili sa mga pantig sa loob ng panaklong. Isulat ang buong salita sa kahon.

1. ka•_____ (lay, may, say)

2. _____•ha (nguk, huk, muk)

3. bu•_____ (hok, dok, gok)

4. ba•li•_____ (sat, mat, kat)

5. _____•ti (win, gin, bin)

6. da•____•ri (pi, li, fi)

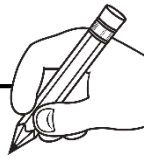
7. tu•_____ (hod, kod, tod)

8. dib•_____ (lib, kib, dib)

9. li•_____ (hod, nod, kod)

10. bi•_____ (sig, ngi, lig)





Magsulat tayo!

Panuto: Bilugan ang tamang pantig na bubuo sa salita para sa isang bagay na isinusuot. Pumili sa mga pantig sa loob ng panaklong. Isulat ang buong salita sa kahon.

1. sapa_____ (tas, tes, tos)

2. pal_____ (da, ba, ga)

3. tsi_____las (me, nge, ne)

4. _____talon (kan, pan, fan)

5. sum_____ro (bre, ble, bri)

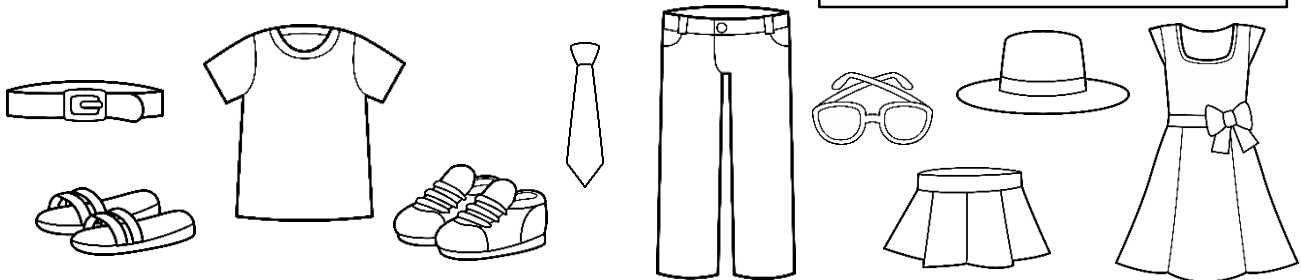
6. ka_____seta (ma, me, mi)

7. _____tida (bas, bes, bos)

8. sintu_____ (ran, ron, rin)

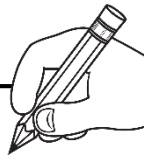
9. sa_____min (ra, pa, la)

10. _____bata (kur, kut, kub)



Pangalan _____

Petsa _____



Magsulat tayo!

Panuto: Bilugan ang tamang pantig na bubuo sa salita para sa isang bagay na isinusuot. Pumili sa mga pantig sa loob ng panaklong. Isulat ang buong salita sa kahon.

1. sa•pa•_____ (tas, tes, tos)

2. pal•_____ (da, ba, ga)

3. tsi•_____•las (me, nge, ne)

4. _____•ta•lon (kan, pan, fan)

5. sum•_____•ro (bre, ble, bri)

6. ka•_____•se•ta (ma, me, mi)

7. _____•ti•da (bas, bes, bos)

8. sin•tu•_____ (ran, ron, rin)

9. sa•_____•min (ra, pa, la)

10. _____•ba•ta (kur, kut, kub)

